

Quick Installation Guide

2Wire HomePortal 2700HGV Gateway
Wireless Broadband Modem
Revision 1.0



Minimum System Requirement

PC:

- Windows 98SE/ME/2000/XP.
- Intel Pentium II 266Mhz, Intel Celeron 300Mhz, AMD K6 266Mhz (or higher) with minimum 64MB RAM (128MB for Windows 2000/XP), 10/100BaseT Ethernet port.

Macintosh:

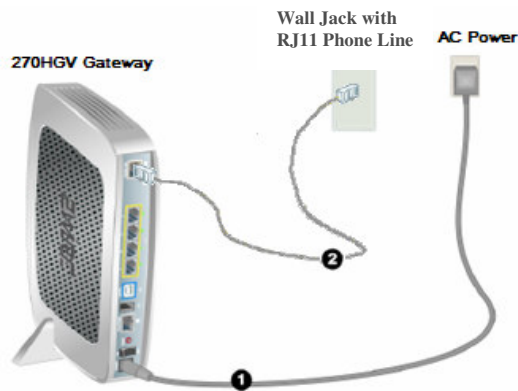
- Mac OS 9 (minimum 64MB RAM) to OS 10.2 (minimum 128MB RAM).
- PowerMac G3 300Mhz Blue/White, PowerMac G4s, iBooks and PowerBooks. 10/100BaseT Ethernet port.

Technical Support Information

Distributor: Malifax Technologies (S) Pte Ltd
Support Hotline: 6287 5033
Support Email: support@malifax.com.sg
Address: 76 Playfair Road LHK2 Building #06-03, Singapore (367996)

Operating Hours:

Monday ~ Friday (except Public Holiday) 9am ~ 9pm
Saturday (except Public Holiday) 9am ~ 1pm



Step 1

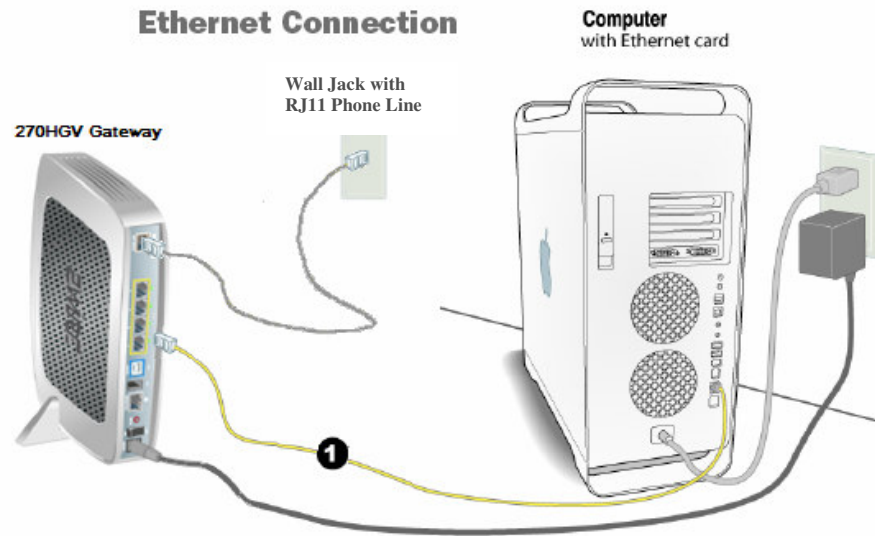
Connecting the 2700HGV Gateway

- 1.1 Connect the supplied grey phone cable into the ADSL port (marked Phone Line) on the 2700HGV gateway.
- 1.2 Connect the other end of the grey phone cable into the wall socket (RJ11), which has ADSL broadband service activated.
- 1.3 Plug the power adapter into the power outlet and modem

Step 2

Connecting Your Computer/Notebook to the Gateway

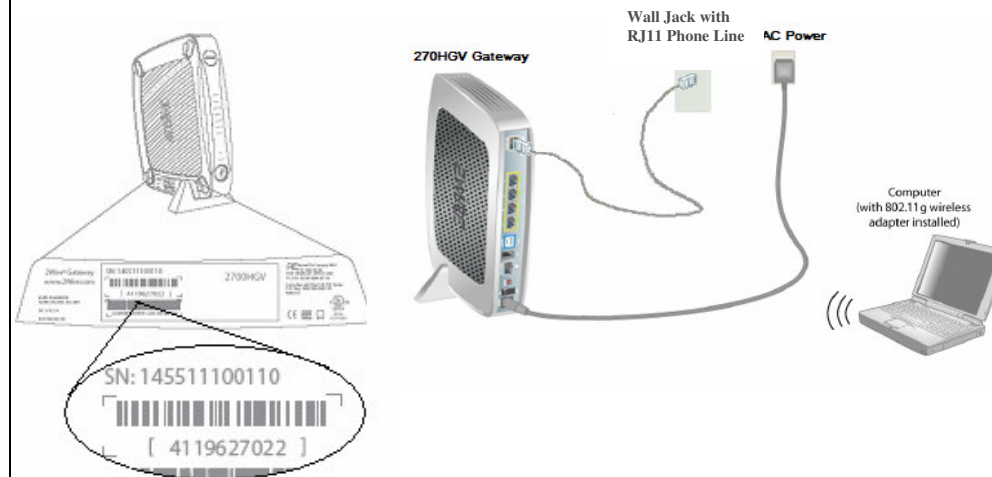
Option 1. Connecting 2700HGV Gateway to PC/Notebook via Ethernet



- 2.1 Connect the Straight Ethernet cable to the Ethernet port on the 2700HGV Gateway
- 2.2 Connect the other end of the Ethernet cable to the Ethernet port on your computer.

Option 2. Connecting 2700HGV Gateway to the PC/Notebook Wirelessly

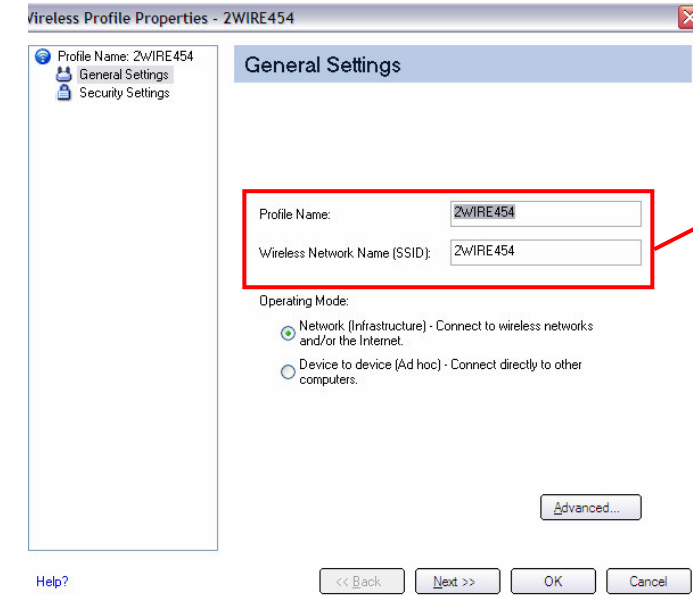
Important! You are required to own a wireless adapter (wireless PC card or wireless USB adapter) or wireless enabled Notebook before you can proceed to the next steps



- 2.1 Follow the installation guide of the wireless adapter (wireless PC card or wireless USB adapter) or wireless enabled Notebook (such as Pentium M, Centrino, others) to install the driver and utilities
- 2.2 Your 2700HGV gateway has default wireless security settings. You can locate the serial number and a default 64-bit WEP wireless encryption key at the bottom of your HomePortal. You will need these two important pieces of information for the security settings.

2.3 Follow the steps below to configure your wireless adapters:

- a. Network: Infrastructure mode
- b. Network Name/SSID/ESS ID: 2WIRE plus last 3 digits of the serial number. E.g. as according to Fig it will be 2WIRE110)
- c. WEP/Network Key: as in Fig it will be 4119627022 (Note: Before you can enter the WEP key, you must enabled WEP to 64bit Hexadecimal selection



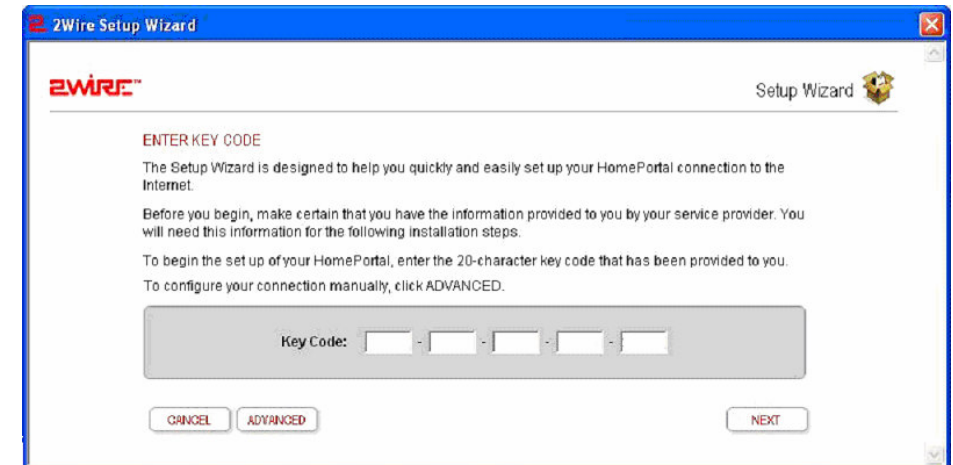
Step 3

Configuring your 2700HGV Gateway

Now that your first computer is connected to the gateway, you need to configure your gateway to communicate with your Internet service provider.

To activate your Internet account:

- 3.1 Open your Internet browser.
- 3.2 Type <http://gateway.2wire.net/setup> into the browser's address line.
- 3.3 When prompted, enter the key code 52B5-2374-22A2-2223-3247
- 3.4 Select your Local Time Zone and click NEXT.
- 3.5 The connection process will begin. During this process the INTERNET light on the front of the gateway will first blink green then turn solid green. This step could take up to five minutes as the gateway searches for your broadband service.
- 3.6 The gateway will now connect to the Internet. This process may take several minutes. If the registration screen opens, click the REGISTER button and complete the 2Wire registration process.



Congratulation! You have completed the 2700HGV Gateway installation.