

Cisco Aironet 350

1. To get started, please ensure that you have completed the installation of the Drivers and Aironet Client Utility for the Cisco Aironet 350 card.
2. Launch the **Aironet Client Utility** as shown in Figure 1 below. Generally, this utility can be launched from **Programs** menu that appears after you click the Windows **Start** button.

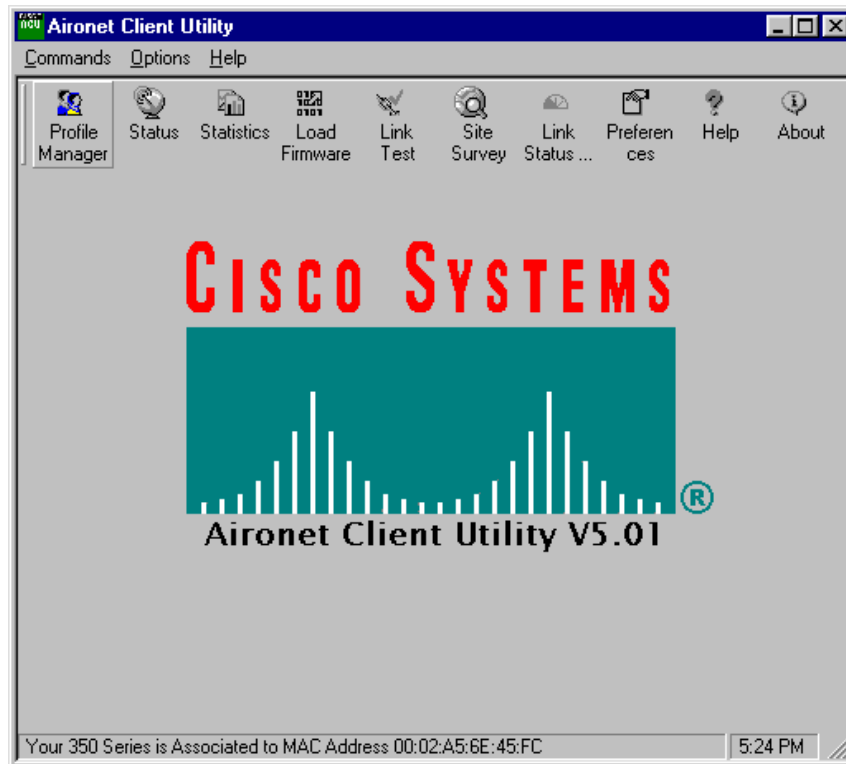
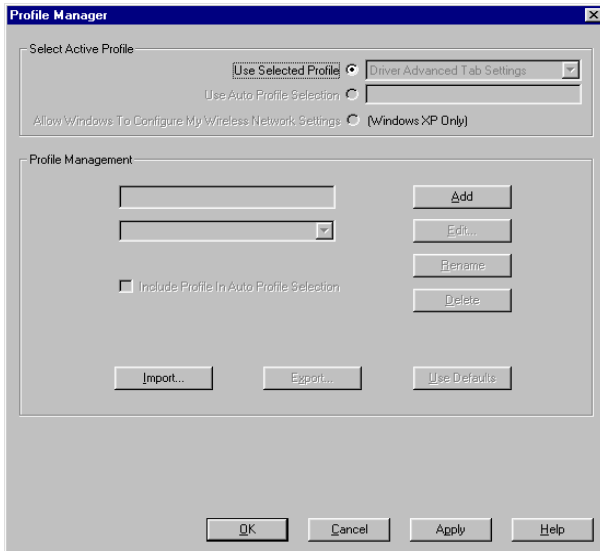
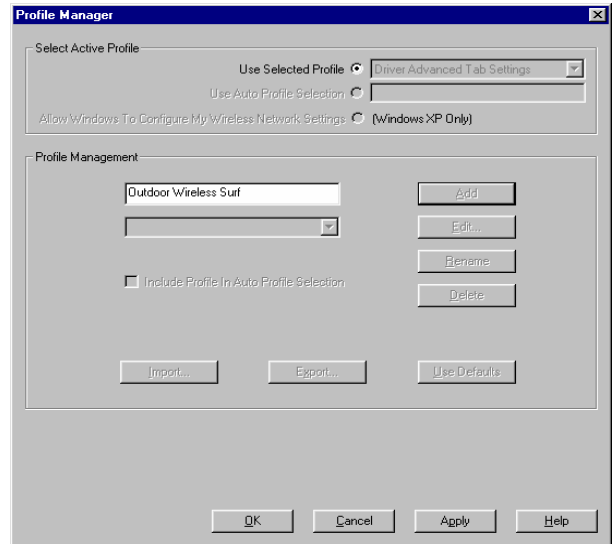


Figure 1

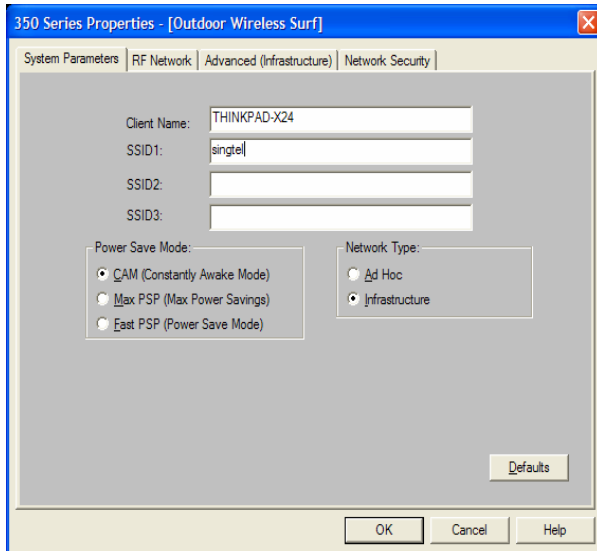
3. Select the **Profile Manger** icon and follow steps 4 - 10 below to create the Outdoor Wireless Surf profile.



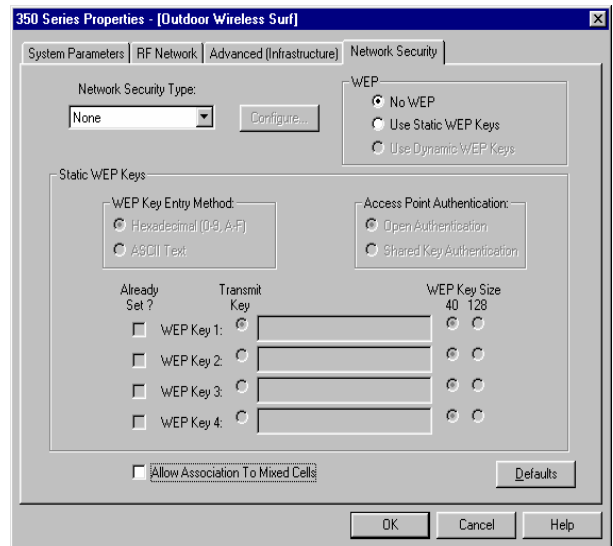
4. To create a new connection profile click on the **Add** button



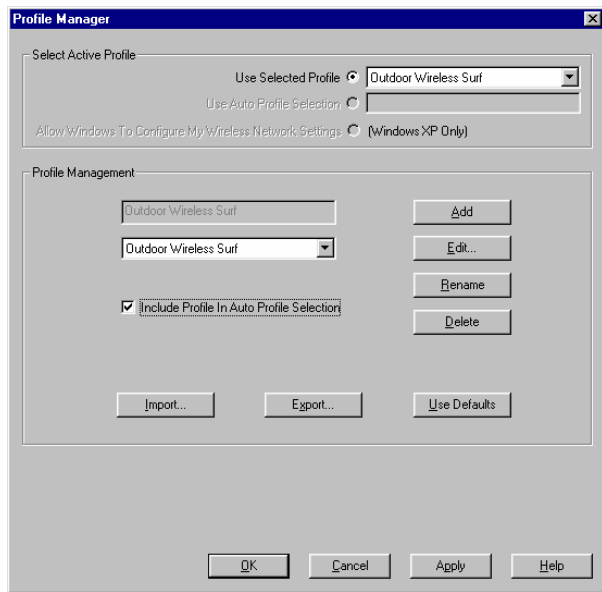
5. Name the profile as **Outdoor Wireless Surf** and click **Apply**.



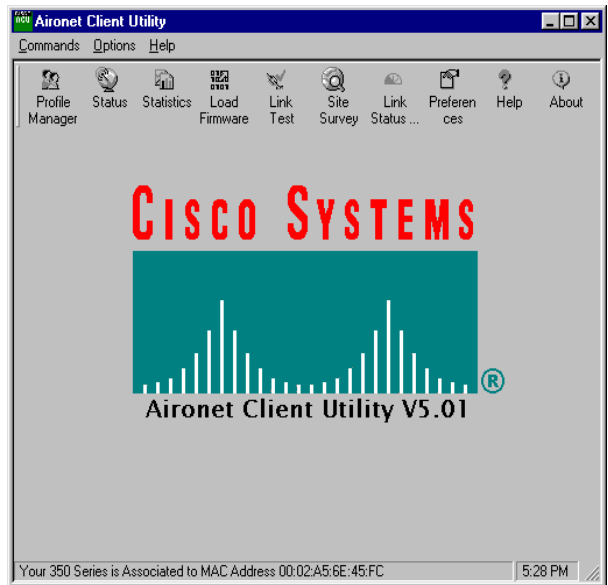
6. Under **System Parameters** tab, select **Infrastructure** mode as the **Network Type** and key in **single** as the **SSID**



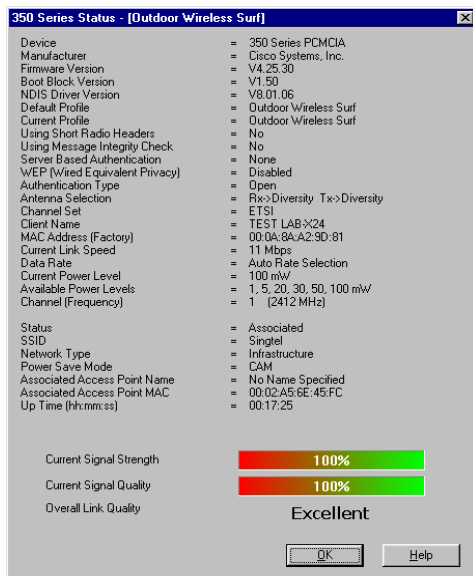
7. Select **Network Security** tab and select **None** as **Network Security Type** and select **No WEP** for the **WEP** setting. Click **OK** to save the settings.



8. Select **Outdoor Wireless Surf** as the **selected profile** and click on the **OK** button to complete the configuration for the Outdoor Wireless Surf profile



9. From the **Aironet Client Utility** dialog box, click on the **Status** icon to view your connection status.



10. You are now successfully associated to the wireless access point at the Wireless Surf Zone, launch your **Internet Browser** to start surfing.