

## Orinoco Silver / Gold and Compaq WL110

### Windows 98 Second Edition, Windows NT, Windows 2000, Windows Millennium Edition

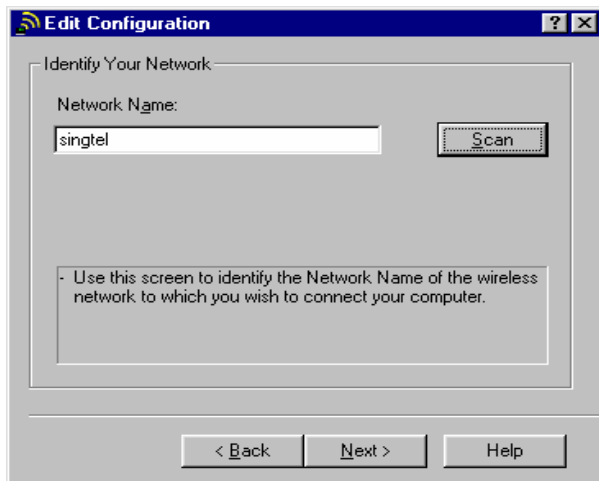
1. To get started, please ensure that you have completed the installation of the Drivers and the Wireless Client Manager utility for the Orinoco / Compaq WL110 card.
2. Launch the **Wireless Client Manager** utility as shown in Figure 1 below. Generally, this utility can be launched from **Programs** menu that appears after you click the Windows **Start** button.



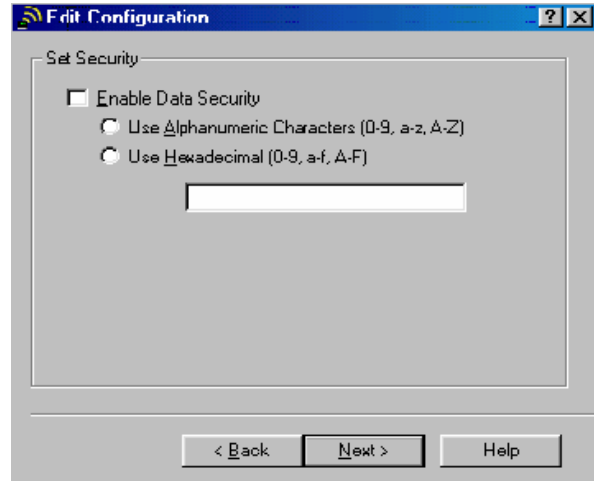
Figure 1

3. From the **Actions** drop down menu, click on **Add/Edit Configuration Profile** and follow steps 4 - 11 to create the Outdoor Wireless Surf profile.

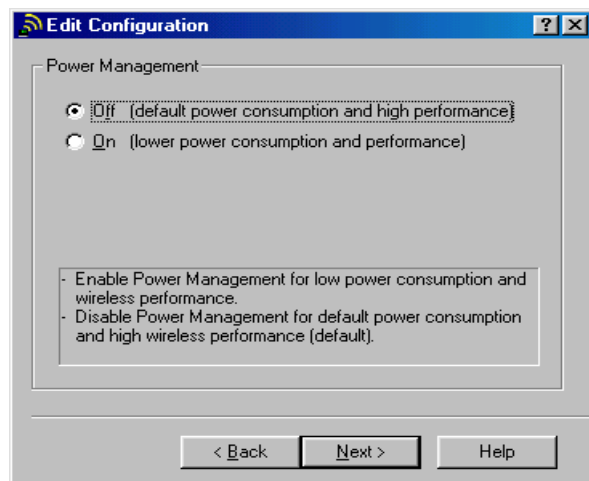
<p>4. Click on the <b>Add</b> button</p>	<p>5. Name the Profile as <b>Outdoor Wireless Surf</b> and select <b>Access Point</b> as the <b>Network Type</b>. Click <b>Next</b> to continue</p>
--	---



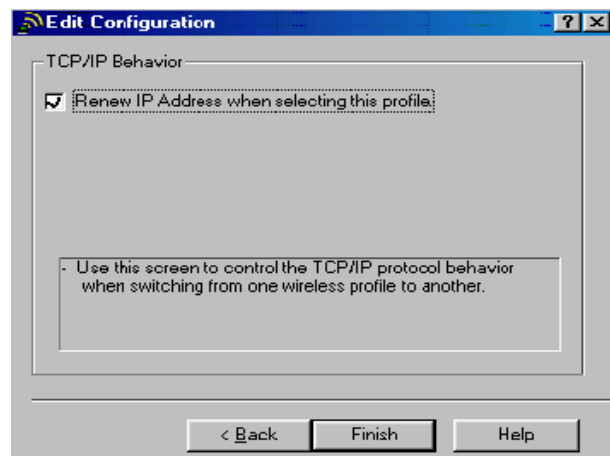
6. Key in **singtel** as the **Network Name**. Click **Next** to continue.



7. Do not select **Enable Data Security** option. Click **Next** to continue.



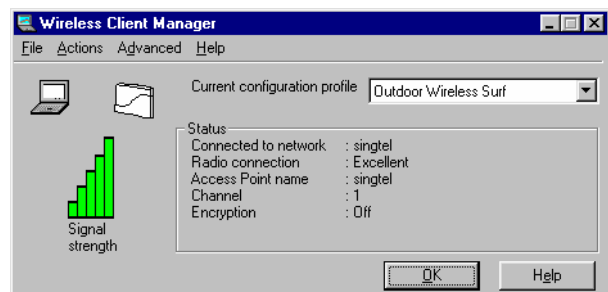
8. Keep the default (i.e. Off) setting for **Power Management**. Click **Next** to continue.



9. Enable the option to renew IP address. Click **Finish** to complete the configuration.



10. At your PC taskbar you will see the Orinoco Wireless Signal Indication bar.



11. You are now associated successfully to the wireless access point at the Wireless Surf Zone, launch your **Internet Browser** to start surfing.

## Windows XP Operating System

1. In Windows XP, the Client Manager utilizes the in-built Wireless Configuration utility.
2. To create the Outdoor Wireless Surf profile, click on Windows **Start** button, select **Connect To** from the **Programs** Menu and click on **Show all connections** as shown in Figure 2

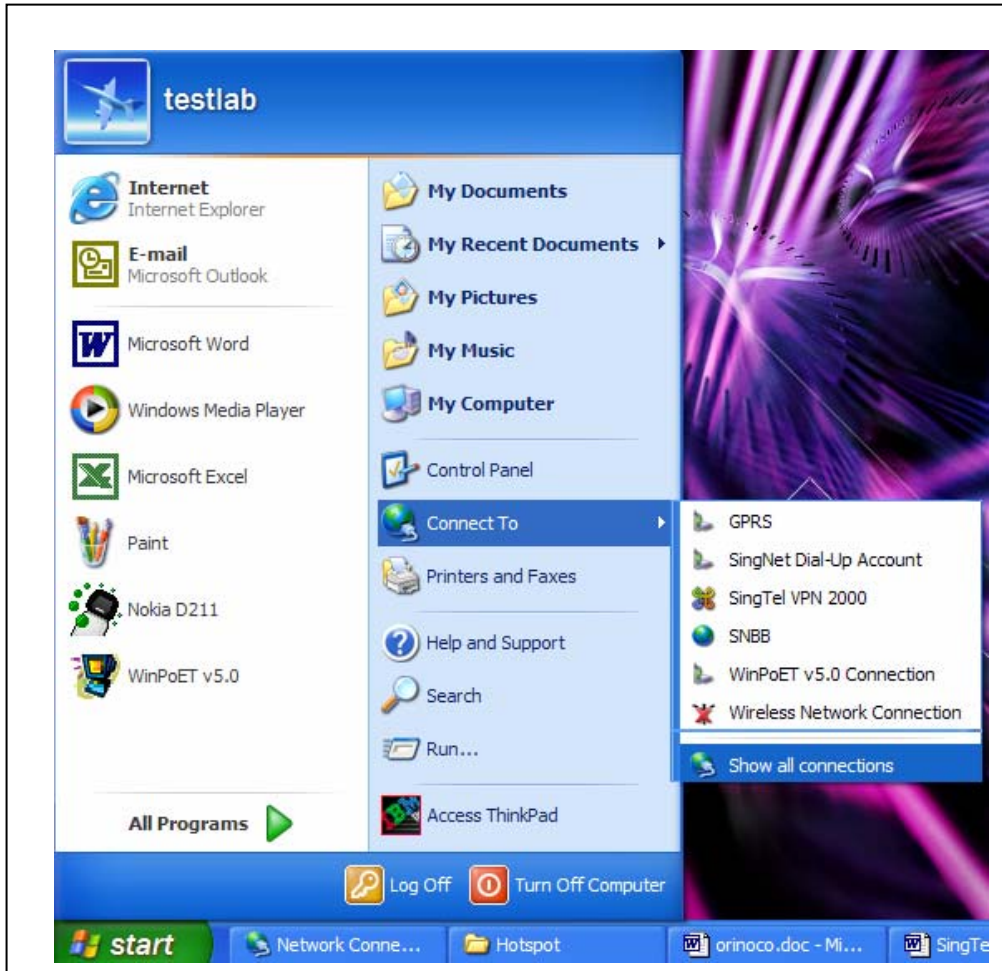


Figure 2

- Under **Network Connection**, right click on your **Wireless Connection** and select **Properties** from the menu as shown in Figure 3.

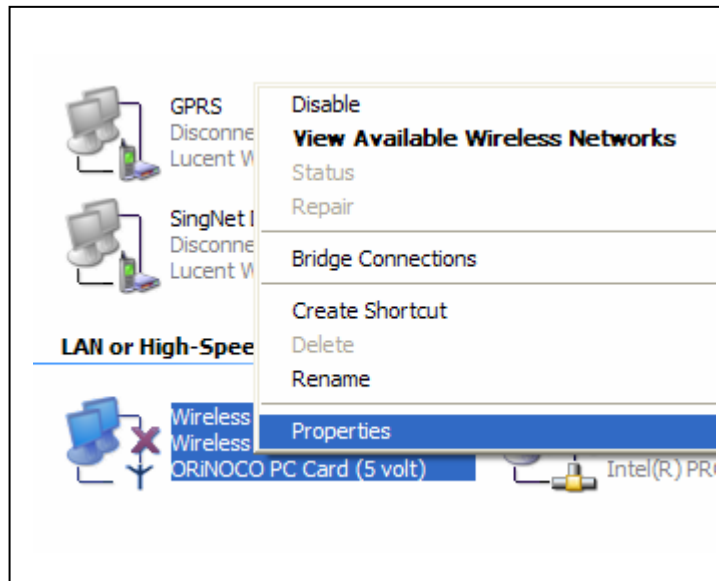
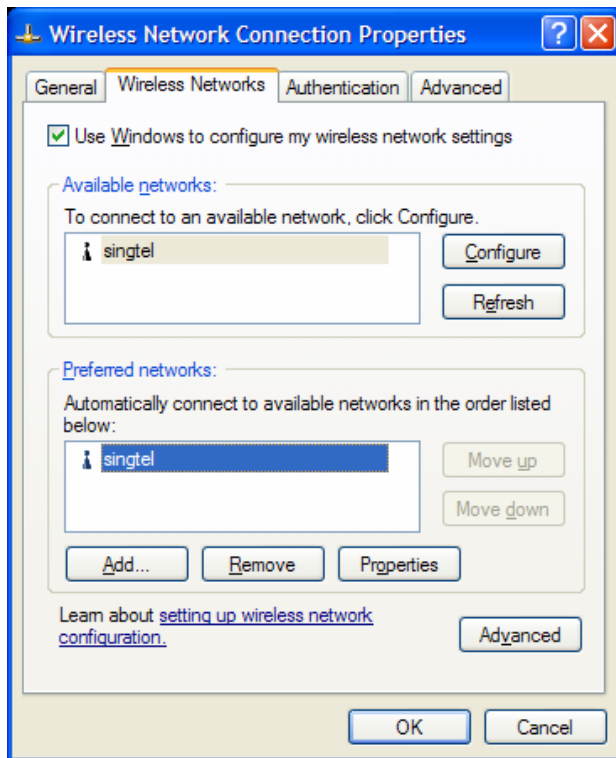


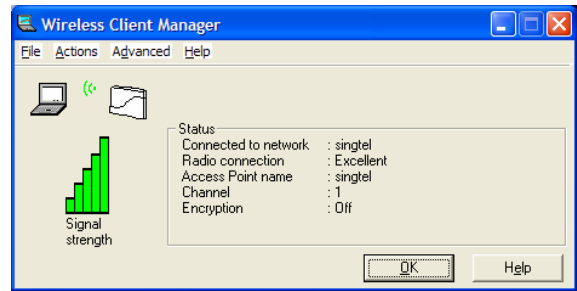
Figure 3

- Follow steps 5 - 8 as shown below to create the Outdoor Wireless Surf profile on Windows XP.

<p>The screenshot shows the 'Wireless Network Connection Properties' dialog box with the 'Wireless Networks' tab selected. The 'Use Windows to configure my wireless network settings' checkbox is checked. Under 'Available networks', the network 'singtel' is listed with a 'Configure' button next to it. There are also 'Refresh', 'Add...', 'Remove', and 'Properties' buttons. At the bottom are 'OK' and 'Cancel' buttons.</p>	<p>The screenshot shows the 'Wireless Network Properties' dialog box. The 'Network name (SSID)' field contains 'singtel'. Under 'Wireless network key (WEP)', the 'Data encryption (WEP enabled)' and 'Network Authentication (Shared mode)' checkboxes are unchecked. The 'Network key' field is empty. The 'Key format' is set to 'ASCII characters', 'Key length' is '104 bits (13 characters)', and 'Key index (advanced)' is '0'. The 'The key is provided for me automatically' checkbox is checked. At the bottom are 'OK' and 'Cancel' buttons.</p>
<ol style="list-style-type: none"> <li>Click on <b>Wireless Networks</b> tab and select <b>Use Windows to configure my wireless network settings</b>. Under the <b>Available networks</b> box, select <b>singtel</b> (if <b>singtel</b> network is not shown, click on the <b>Refresh</b> button) and click on the <b>Configure</b> button.</li> </ol>	<ol style="list-style-type: none"> <li>Enter <b>singtel</b> as the <b>SSID</b>. Do <u>not</u> select <b>Data Encryption</b> and <b>Network Authentication</b>. Click <b>OK</b> to save the settings.</li> </ol>



7. After you have successfully created **singtel** as your preferred network, click **OK** to activate the settings.



8. You are now associated successfully to the wireless access point at the Wireless Surf Zone, launch your **Internet Browser** to start surfing.