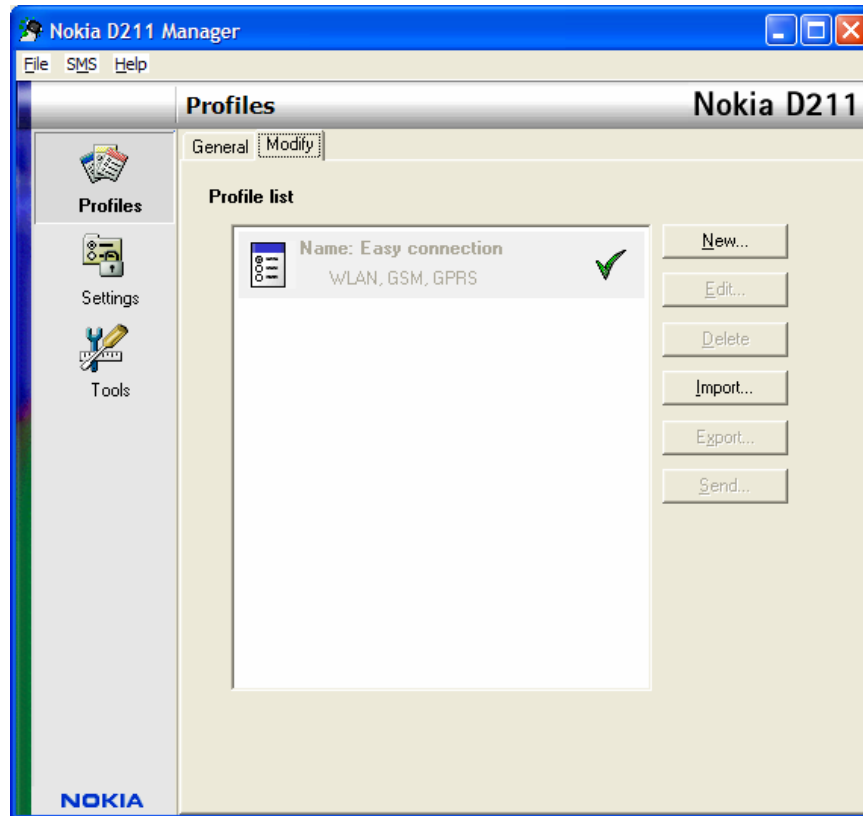


## Nokia D211

1. To get started, please ensure that you have completed the installation of the Drivers and Nokia D211 Manager utility for the Nokia D211 card.
2. Launch the **Nokia D211 Manager** utility as shown in Figure 1 below. Generally, this utility can be launched from **Programs** menu that appears after you click the Windows **Start** button.

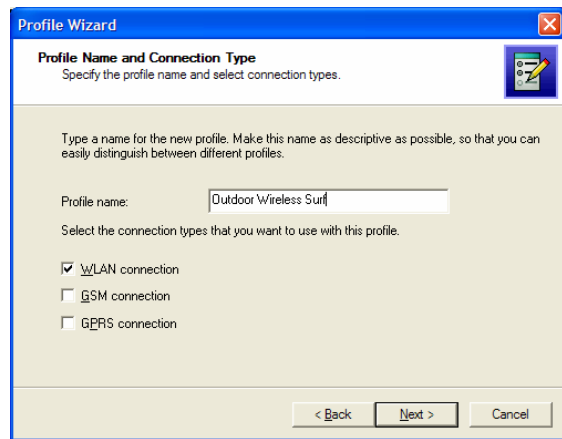


**Figure 1**

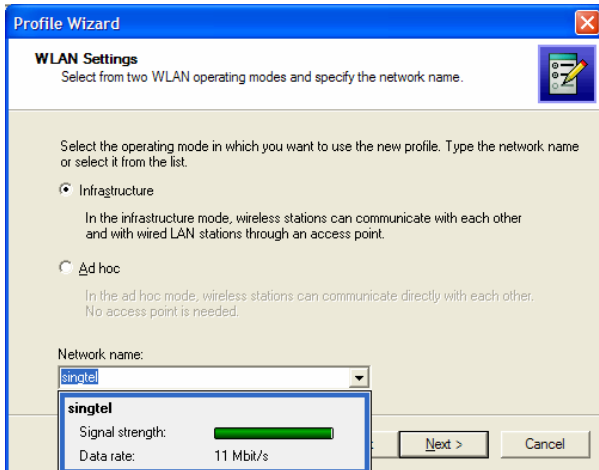
3. Select the **Modify** tab and click on **New**. Follow steps 4 - 11 to create a new connection profile.



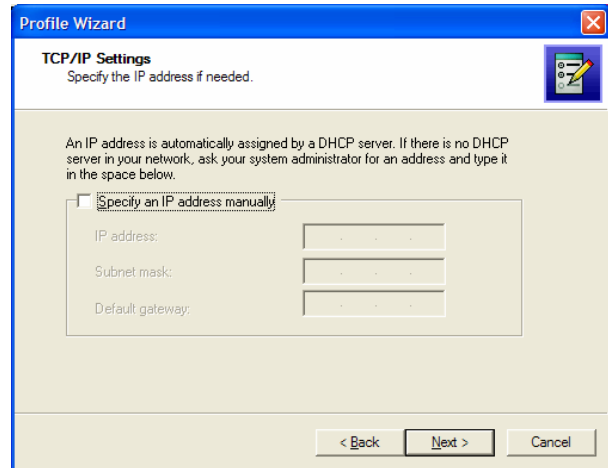
4. Click **Next** to begin



5. Enter **Outdoor Wireless Surf** as the **Profile name** and select **WLAN connection** as the connection type



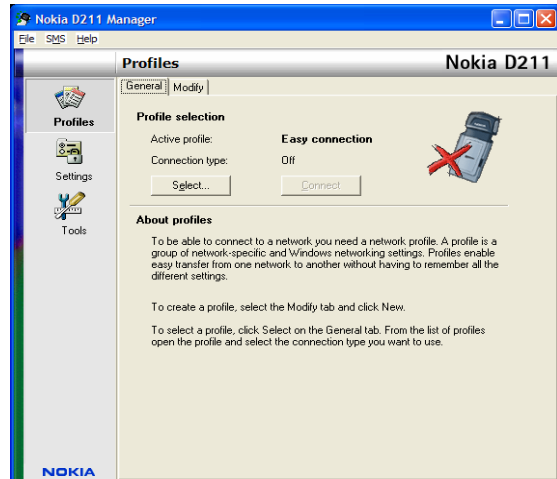
6. Next, select **Infrastructure** mode as the operating mode and key in **singtel** as the **Network Name**. Alternatively, you can select **singtel** from the drop down menu.



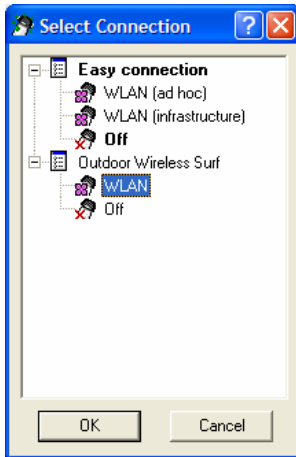
7. Do not select the **Specify an IP address manually** option. Click **Next** to continue.



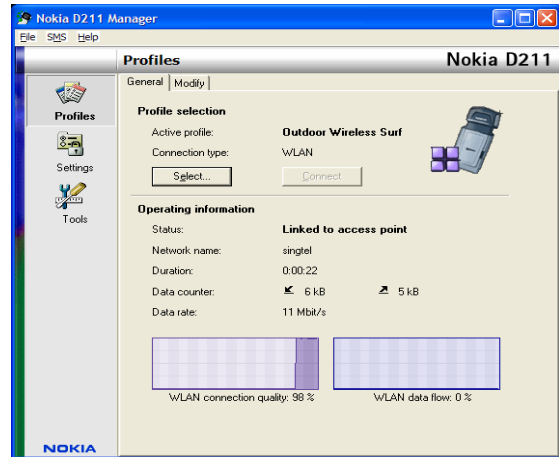
8. Click on the **Finish** button to complete the configuration



9. Next, select the **General** tab from **Nokia D211 Manager** utility and click on the **Select** button to activate your new connection profile.



10. Expand **Outdoor Wireless Surf** profile, select **WLAN** and click **OK**



11. You are now associated successfully to the wireless access point at the Wireless Surf Zone, launch your **Internet Browser** to start surfing.