

RFNet PCM-01

1. To get started, please ensure that you have completed the installation of the Drivers and RFNet 802.11b Wireless LAN utility for RFNet PCM-01 card.
2. Launch the **RFNet 802.11b Wireless LAN Utility** as shown in Figure 1 below. Generally, this utility can be launched from **Programs** menu that appears after you click the Windows **Start** button.

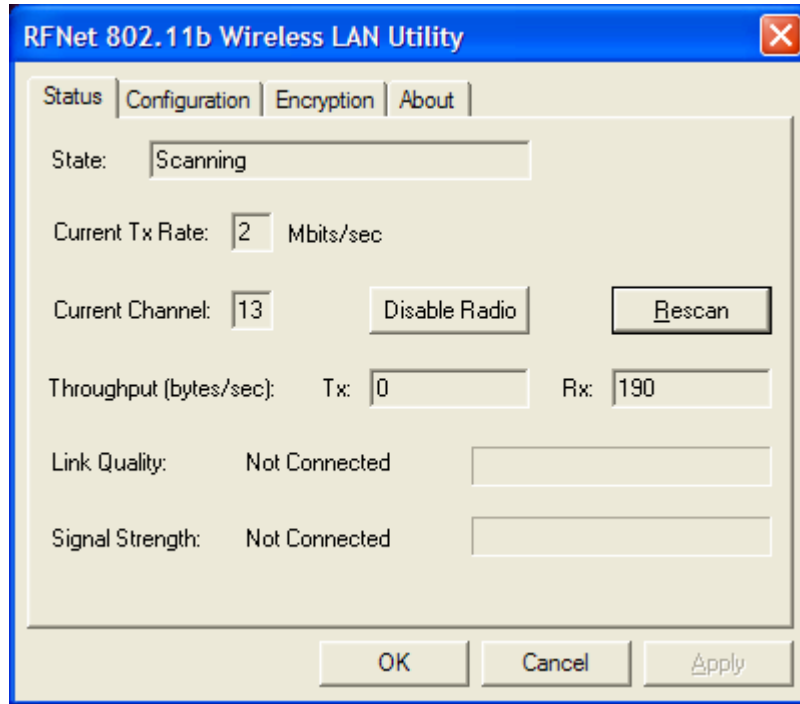
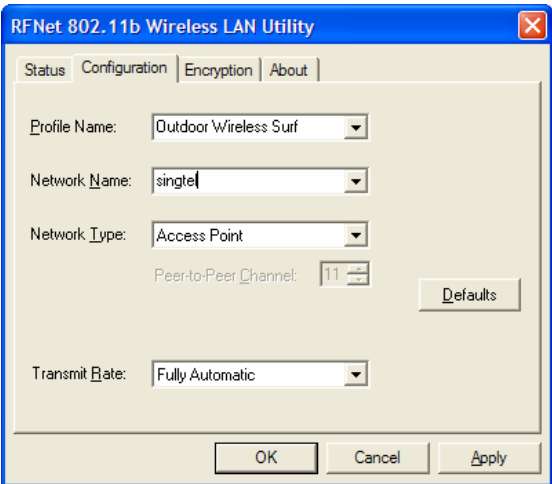
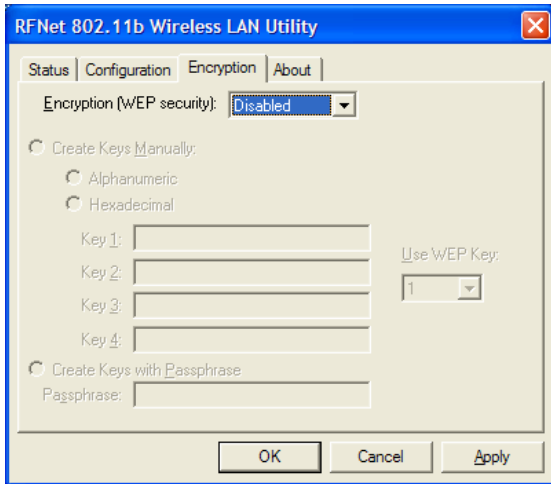
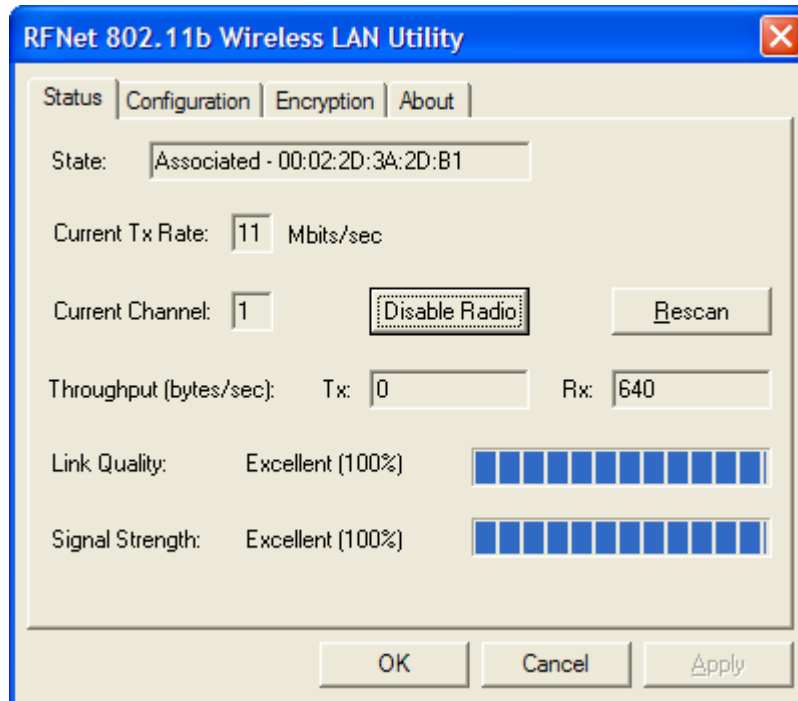


Figure 1

3. Select the **Configuration** tab and follow steps 4 - 6 to create the Outdoor Wireless Surf profile.

 The screenshot shows the 'RFNet 802.11b Wireless LAN Utility' window with the 'Configuration' tab selected. The 'Profile Name' is 'Outdoor Wireless Surf'. The 'Network Name' is 'singtel'. The 'Network Type' is 'Access Point'. The 'Peer-to-Peer Channel' is '11'. There is a 'Defaults' button. The 'Transmit Rate' is 'Fully Automatic'. At the bottom are 'OK', 'Cancel', and 'Apply' buttons.	 The screenshot shows the 'RFNet 802.11b Wireless LAN Utility' window with the 'Encryption' tab selected. The 'Encryption (WEP security)' is 'Disabled'. There are radio buttons for 'Create Keys Manually' (with sub-options 'Alphanumeric' and 'Hexadecimal') and 'Create Keys with Passphrase'. There are four 'Key' input fields and a 'Passphrase' input field. A 'Use WEP Key' dropdown is set to '1'. At the bottom are 'OK', 'Cancel', and 'Apply' buttons.
<ol style="list-style-type: none">4. Enter Outdoor Wireless Surf as the Profile Name, and key in singtel as the Network Name. Select Access Point as the Network Type and click Apply to save the settings.	<ol style="list-style-type: none">5. Next, click on the Encryption tab and disable Encryption (WEP security). Click Apply to save the changes.



6. You are now associated successfully to the wireless access point at the Wireless Surf Zone, launch your **Internet Browser** to start surfing.